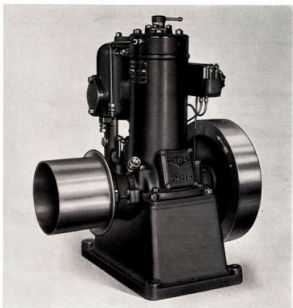


~~DROTT~~



Coldstarting crude oil engines

Stationary Types Series "R".

Sizes from 5 to 20 HP.

Characterized by:

- Instantaneous starting from cold.
- Entirely enclosed centrifugal governor, working in a bath of oil.
- Roller main bearings.
- Low weights. Simplicity in design and handling. Utterly reliable.

MOTOR A.-B. PYTHAGORAS

NORRTELJE
SWEDEN



STATIONARY ENGINES SERIES "R".

Type:	B. H. P.		No. of Cyl.:	Revs. per min.:	Fuel Consumption per HP (Hour ^{*)}		Nett Weight		Gross Weight		Shipping volume		Code:
	Norm.:	Max.:			Grams:	Lbs.:	Kgs.:	Lbs.:	Kgs.:	Lbs.:	Cbm.:	Cub. feet:	
SR-5	5	6 ¹ / ₂	1	900	265	0.58	215	470	300	660	0.48	17	Galam
SR-8	8	11	1	800	260	0.57	310	680	410	900	0.70	25	Gotur
SR-16	16	20	2	800	260	0.57	475	1045	600	1320	0.99	32	Gesox

^{*)} Guaranteed within five per cent.

SPECIFICATION:

DROTT Engines of Series "R" are equipped with:—

Arrangement for instantaneous starting from cold by means of cartridges.

Skefko (S. K. F.) double-row, spherical roller main bearings.

Centrifugal governor, entirely enclosed and working in a bath of oil. It is provided with variable injection timing.

Force-feed lubricator with visible oil feeds.

Cooling water pump of bronze, horizontally disposed.

Silencer (water-cooled for type SR-16).

Fly-wheel for a degree of irregularity of abt. 1:40.

Solid belt pulley.

Cast iron foundation.

ACCESSORIES and SPARE PARTS:

100 starting cartridges, emergency blow lamp, screw driver, solid and adjustable spanners, oil can, various special tools, fuel strainer.

5 injection nozzles, 5 balls and 5 springs for injection valve, 3 ignition tubes, 2 piston rings (all this per cylinder), 2 suction valves and 2 delivery valves for fuel pump, 1 set of springs for fuel pump, pump valves, governor, and air valve, 1 set of joints and gaskets.

MAIN DIMENSIONS:

Type:	Length:		Width:		Height		Fly-wheel				Belt Pulley				Diam. of Exhaust Pipe Inch.:
	mm.	inch.	mm.	inch.	mm.	inch.	Diameter:		Width:		Diameter:		Width:		
							mm.	inch.	mm.	inch.	mm.	inch.	mm.	inch.	
SR-5	660	26 ³ / ₈	500	19 ³ / ₄	765	30	390	15 ³ / ₈	100	4	225	8 ⁷ / ₈	160	6 ¹ / ₄	2 ¹ / ₂
SR-8	735	29	600	23 ³ / ₈	915	36	475	18 ³ / ₄	100	4	250	9 ⁷ / ₈	170	6 ³ / ₄	2 ¹ / ₂
SR-16	1000	40 ¹ / ₂	600	23 ³ / ₈	915	36	500	19 ³ / ₄	100	4	300	11 ¹ / ₈	200	7 ⁷ / ₈	3

To special order the following additional are supplied:

Clutch pulley instead of the solid belt pulley.

Fuel tank with fittings.

Cooling tower.

Pipes and hoses for fuel and water.

Extra heavy fly-wheel for electric drive.

All data given here are without engagement and can be altered without previous notice.