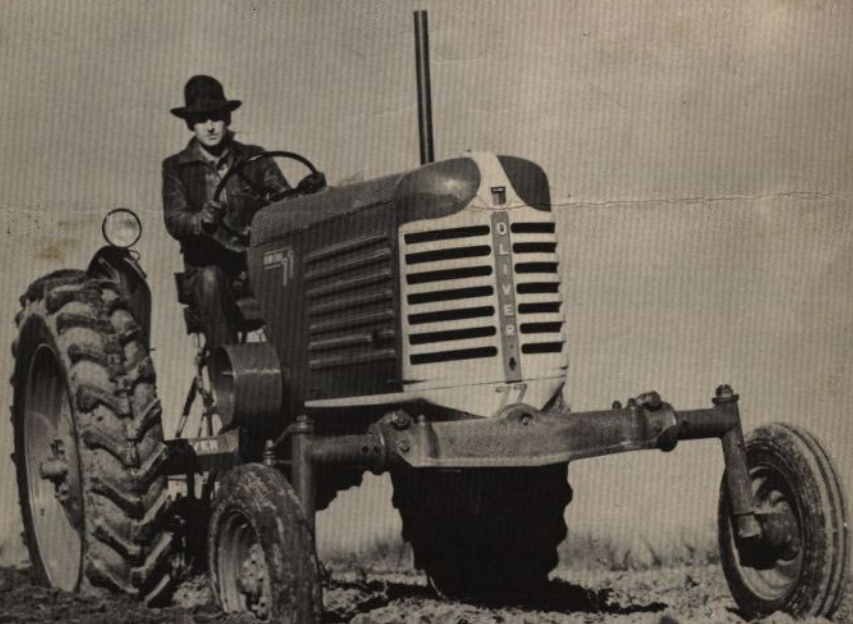


# OLIVER

## "77" TRACTOR

with adjustable front axle

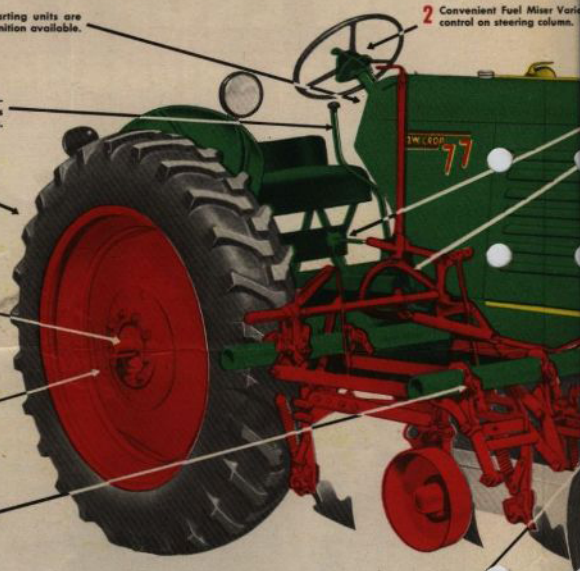


THE  
**OLIVER**  
CORPORATION

**"FINEST IN FARM MACHINERY"**

# NEW OLIVER

## WITH ADJUSTABLE

- 
- 1** Battery ignition. All electric starting units are standard equipment. Magneto ignition available.
- 2** Convenient Fuel Mixer Valve control on steering column.
- 16** Six-forward-speed and two-reverse-speed transmission, all on one shift lever. Forward speeds range from 2.63 to 12.26 m.p.h. on 11 x 38 tires.
- 15** Direct drive power take-off with independent clutch (special equipment).
- 14** Rear axle tread width adjustment with 60 to 92½ inches. Special 100-inch axle provides tread width range of 72½ to 115½ inches.
- 13** Cast iron or stamped steel wheels that take a wide range in tire sizes. Interchangeable with all other new Oliver Row Crop models. "Tip-Toe" steel wheel attachment fits cast iron wheel.
- 12** Exclusive Oliver "QD" (Quick-Detachable) method of mounting implements. Support pipes extend through tractor frame to provide a rigid mounting. The tension of the curved "QD" steel clamps keeps the implement firmly locked in place. Support pipes, levers and rockershafts become component parts of several other Oliver attachments. Oliver's full line of centrally mounted and rear suspended tools are basically interchangeable among all new Row Crop tractor models.
- 11** Short turning radius improves maneuverability.

## Interchangeable Row Crop Front Wheel

These three Row Crop front wheel assemblies are completely interchangeable. Just remove six bolts, uncouple the steering shaft and the entire assembly is disconnected. An extra frame casting to hold a wishbone in position on the Adjustable Front Axle unit is easily attached or detached.



Adjustable Front Axle assembly



# ROW CROP "77"

## ADJUSTABLE FRONT AXLE

Fuel Mixer Variable Speed Governor  
control column.

3 Self-contained, removable belt pulley unit and  
sure-acting, automatically lubricated power lift  
(special equipment).

4 Smooth, 6-cylinder overhead valve "HC" engine  
for gasoline, "KD" engine for tractor fuels, and  
diesel (available later).

5 Patented air intake construction. Intake is under  
radiator hood, away from dust raised by tractor  
wheels.

6 Full length, weather-protecting side doors keep  
out dust, mud and moisture.

### OLIVER ROW CROP "77" WITH ADJUSTABLE FRONT AXLE

This Row Crop model provides an extra margin of  
safety on hillsides, extra stability at high speeds  
and in rough places. It combines maximum clear-  
ance with all the other advantages of a 4-wheel  
tractor and is the practical farm power unit for the  
cultivation of wide-row crops where it's necessary  
to have front and rear wheels track, for straddling  
a swath of hay, for easy furrow guidance in plow-  
ing, and for many other jobs.

7 One-piece front frame.

8 Sturdy, adjustable front axle with a choice in width  
ranging from 63½" to 84½" in 3-inch steps, or 68½"  
to 89½" by reversing the wheels.

9 Wide base front wheel rims accommodate over-  
size tires necessary for heavy front and loads.

10 New front wheel bearing seal effectively keeps  
dirt out, permits long use of lubricant.

## Wheel Units - Installed Quickly and Easily



Dual Front Wheel assembly



Single Front Wheel assembly

The **OLIVER** Corporation  
400 WEST MADISON STREET  
CHICAGO 6, ILLINOIS



"FINEST IN FARM MACHINERY"

# OLIVER ROW CROP AND STANDARD "77"

## General Specifications

(Subject to Change Without Notice)

**ENGINE:** Six cylinder, four-cycle, vertical, valve-in-head. Engine speed 1600 r.p.m. Bore, 3 $\frac{1}{2}$ " ; Stroke 3 $\frac{3}{4}$ ". Displacement, 179.4 cubic inches. Four main bearings, removable precision type, steel back, habbitt lined, with shims for easy adjustment. Connecting rod bearings, removable precision type, steel back, habbitt lined, with shims for easy adjustment. Pistons, nickel iron, with three compression and one oil ring above the pin. Removable wet type nickel iron cylinder sleeves. Heavy crankshaft dynamically balanced. Crankcase ventilation by leather on top of rocker arm cover. Water temperature and oil pressure gauges. Electric starter regular equipment.

**IGNITION:** Modern battery type distributor, sealed against dust. Centrifugal automatic spark control at all engine speeds.

**GOVERNOR:** Centrifugal, variable speed type. Fully enclosed and automatically lubricated. Hand control at steering wheel.

**LUBRICATION:** Engine lubrication is by means of pressure from large capacity oil pump located in sump. "Floater" screen oil pump inlet. Oil capacity in crankcase, 5 quarts. Oil capacity in transmission and final drive, 4 gallons. Chassis lubrication by grease gun through pressure fittings.

**OIL FILTER:** Improved type. Element easily replaceable and filter base attached directly to crankcase. No tubes or fittings.

**AIR CLEANER:** Oil wash type. Cup easily removed for cleaning.

**COOLING SYSTEM:** Full length water jacket for uniform cooling. Water circulation by pump on fanshaft. Water temperature controlled by a by-pass type thermostat. Fan and pump directly driven by V-belt from crankshaft. Fan belt is tightened by increasing effective diameter of driving pulley which results in improved cooling as belt wears and requires adjustment.

**FUEL SYSTEM:** Gravity from fuel tank. Capacity of fuel tank, 16 $\frac{1}{2}$  gallons. Fuel strainer and removable sediment bowl between fuel tank and carburetor.

**CLUTCH:** Single plate, dry type, 9 inches in diameter. Self-adjusting spring loaded and foot pedal operated.

**SEAT:** Upholstered type with back rest. Adjustable forward and back.

**TRANSMISSION:** Selective sliding spur gears, alloy steel, carburized and hardened. Shafts are heat-treated alloy steel, mounted on ball and roller bearings. Six speeds forward; two reverse. Transmission fully sealed and running in oil. Special combination for applications requiring it—four speeds forward, four reverse.

**BRAKES:** Differential, external contracting type. Fully enclosed, external adjustment. Foot operated either individually or equalized.

**BELT PULLEY:** Standard equipment on Standard "77". (Extra equipment on Row Crop "77") 11 $\frac{3}{4}$ " diameter, 7 $\frac{3}{4}$ " face, 992 r.p.m., 3080 ft. per min. Pulley or entire mechanism removable.

**POWER TAKE-OFF:** (Extra equipment.) Direct drive type independent of main clutch. Shaft 1 $\frac{1}{2}$ " diameter, 6B spline. Rotates clockwise at 533 r.p.m. Located on centerline of tractor in separate housing with own clutch. Safety shields.

## Additional Specifications for ROW CROP "77" and STANDARD "77"

### ROW CROP "77" with Adjustable Front Axle

**STEERING:** Worm and gear type. Enclosed and operating in oil. Front wheel post mounted on tapered roller bearings.

**WHEELS & TIRES:** Front wheels: two stamped steel, integral rims, 5.50-16 tires. Mounted on tapered roller bearings. Front wheel tread 63 $\frac{3}{4}$ " to 89 $\frac{1}{2}$ ". Rear wheels: two stamped steel, integral rims, 10-38, 11-38 or 12-38 tires. Distance between rear wheels: adjustable from 60 to 92 $\frac{1}{2}$  inches. (See Instruction Manual for tread adjustments.)

**SPEEDS—Forward:** First, 2 $\frac{1}{2}$  m.p.h.; Second, 3 $\frac{1}{2}$  m.p.h.; Third, 4 $\frac{1}{2}$  m.p.h.; Fourth, 6 m.p.h.; Fifth, 7 m.p.h.; Sixth, 12 $\frac{1}{2}$  m.p.h.; Reverse low, 2 $\frac{3}{4}$  m.p.h.; Reverse high, 4 $\frac{1}{2}$  m.p.h. These are rated speeds of tractor at rated 1600 r.p.m. engine speed and 11-38 tires.

**DRAWBAR:** Adjustable. Vertical adjustment 11 $\frac{3}{4}$ " to 20"; five fixed positions. Lateral adjustment, 20 $\frac{3}{4}$ " total.

**BELT PULLEY:** (Extra equipment) 11 $\frac{3}{4}$ " diameter, 7 $\frac{3}{4}$ " face, 992 r.p.m. 3080 ft. per minute. Pulley or entire mechanism removable.

**POWER LIFT:** (Extra equipment) Mechanical. Simple, fast, positive with easy-to-reach control pedal. Operates whether tractor is moving or standing still.

**GENERAL DIMENSIONS:** Length overall, 139 $\frac{1}{4}$  inches. Width overall, 80 $\frac{1}{4}$  inches. Height to top of radiator, 61 $\frac{3}{4}$  inches. Wheelbase, 90 $\frac{1}{2}$  inches. Crop clearance, 25 $\frac{1}{4}$  inches. Approximate field weight, 3660 lbs. (Weight does not include wheel weights, liquid ballast or extra equipment.) Weights and dimensions given are for 11-38 tires.

### STANDARD "77"

**STEERING:** Worm and gear type. Enclosed and operating in oil.

**WHEELS & TIRES:** Front wheels: two stamped steel, integral rims, 5.50-16 tires, mounted on tapered roller bearings. Rear wheels: two stamped steel, integral rims, 11-26, 12-26 or 13-26 tires. Front wheel tread 47 $\frac{1}{2}$ " or 52 $\frac{1}{2}$ ". Rear wheel tread 52 $\frac{1}{2}$ ". (See Instruction Manual for tread adjustments.)

**SPEEDS—Forward:** First, 2 $\frac{1}{2}$  m.p.h.; Second, 3 $\frac{1}{2}$  m.p.h.; Third, 4 $\frac{1}{2}$  m.p.h.; Fourth, 6 m.p.h.; Fifth, 7 $\frac{1}{2}$  m.p.h.; Sixth, 12 $\frac{1}{2}$  m.p.h.; Reverse low, 2 $\frac{3}{4}$  m.p.h.; Reverse high, 4 $\frac{1}{2}$  m.p.h. These are rated speeds of tractor at rated 1600 r.p.m. engine speed and 13-26 tires.

**DRAWBAR:** Adjustable. Vertical adjustment 9" to 18 $\frac{3}{4}$ "; five fixed positions. Lateral adjustment, 20 $\frac{3}{4}$ " total.

**BELT PULLEY:** 11 $\frac{3}{4}$ " diameter, 7 $\frac{3}{4}$ " face, 992 r.p.m., 3080 ft. per minute. Pulley or entire mechanism removable.

**GENERAL DIMENSIONS:** Length overall, 129 $\frac{1}{4}$  inches. Width overall, 64 $\frac{1}{2}$  inches. Height to top of radiator, 55 $\frac{3}{4}$  inches. Wheelbase, 78 $\frac{1}{2}$  inches. Ground clearance, 13 $\frac{1}{4}$  inches. Approximate field weight, 3460 lbs. (Weight does not include wheel weights, liquid ballast or extra equipment.) Weights and dimensions given are for 12-26 tires.