
J 2990



 **JONSERED**

JONSERED 2990

JONSERED 2990 – a robust production loader for rational load handling for mobile or static installations.

Intensive work and heavy loads place big demands on a loader. JONSERED 2990 is a new crane in the 29 tm class, designed throughout for continuous operation in a tough environment. Quick and easily manoeuvred even with the heaviest loads.

Truck mounted with a boom length of 10.6 m the 2990 is a powerful separate loader – highly productive for group loading of saw logs or pulpwood. On static mountings, with the alternative boom lengths of 10.6, 13.7 or 16 metres, the 2990 is a rational production loader for a number of different applications, e.g. at sawmills, scrapyards or in industry.

JONSERED 2990 unites strength, reach and long service life – a good economic combination that is difficult to beat.



1

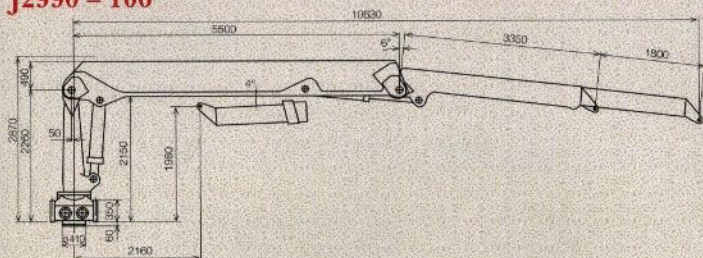


2

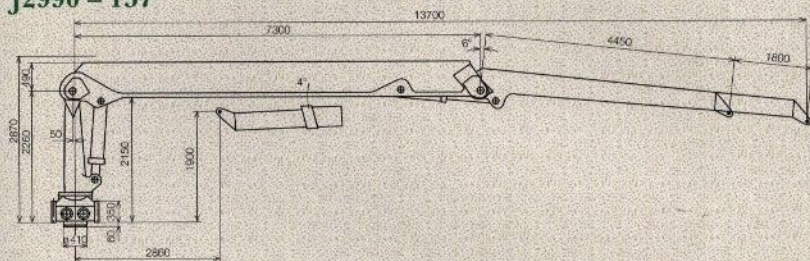
- 1 The big slide pads for lateral guidance of the boom extension are easily adjusted from the outside. Plenty of room for the hoses inside the boom (patented) as well as for a cable for weighing equipment.
- 2 JONSERED 2990 is built for tough work and continuous operation.



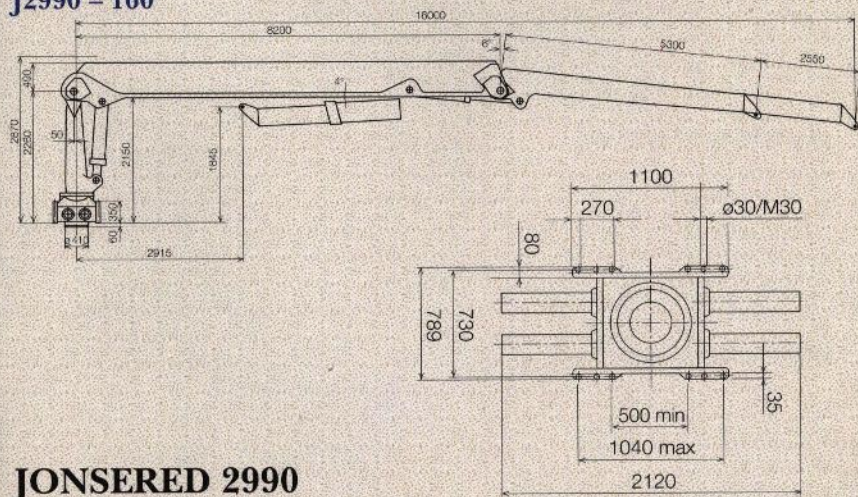
J2990 - 106



J2990 - 137



J2990 - 160

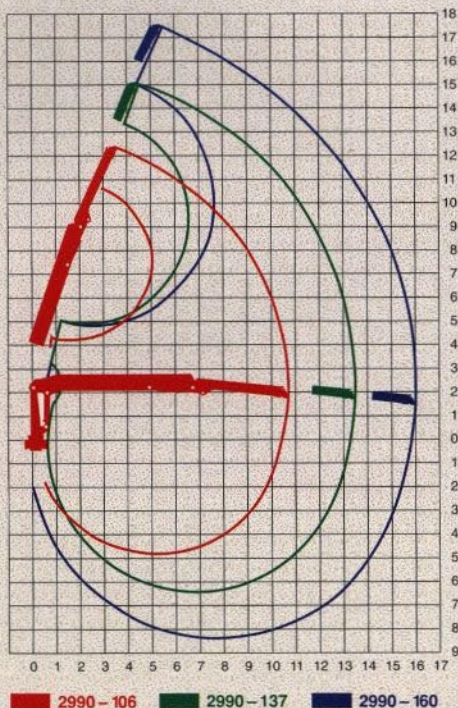


JONSERED 2990

TECHNICAL DATA

	2990 - 106	2990 - 137	2990 - 160
Lifting capacity:	30.0 tm (297 kNm)	26.5 tm (260 kNm)	23.5 tm (230 kNm)
Outreach:	10 600 mm	13 700 mm	16 000 mm
Hydraulic extension:	1 800 mm	1 800 mm	2 550 mm
Outreach/lifting capacity:	4.0 m - 7 500 kg 6.0 m - 5 000 kg 8.0 m - 3 700 kg 10.0 m - 3 000 kg	5.0 m - 5 300 kg 7.0 m - 3 700 kg 9.0 m - 2 900 kg 13.0 m - 1 900 kg	7.0 m - 3 350 kg 10.0 m - 2 250 kg 13.0 m - 1 650 kg 16.0 m - 1 300 kg
Slewing torque gross:	47 kNm	47 kNm	47 kNm
Slewing torque net:	40 kNm	40 kNm	40 kNm
Slewing angle:	390°	390°	390°
Transport height:	2 800 mm	2 800 mm	2 800 mm
Working pressure:	250 bar	250 bar	250 bar
Weight:	3 750 kg	4 090 kg	4 380 kg

JONSERED forestry cranes are designed using strength calculations in accordance with the Swedish standard IKH 4.30.1, corresponding to DIN 15018 class H1/B5. The cranes are reviewed by the Swedish Plant inspectorate.



We reserve the right to introduce modifications.
The illustrations do not always show the standard version of the crane.



Despite its size and reach the JONSERED 2990 installed on a truck is a compact and easily manoeuvred unit.



JONSERED

HAB FOREST AB • S-621 83 HUDIKSVALL • SWEDEN