
J3390



JONSERED



1

1. The big slide pads for lateral guidance of the boom extension are easily adjusted from the outside. Plenty of room for the hoses inside the boom
2. The hydraulic system for the JONSERED 3390 can be individually modified to suit different types of operation and customer requirements.



2



Photo: Henschel

JONSERED 3390

*JONSERED 3390 – a new colossus for
the really heavy jobs.*

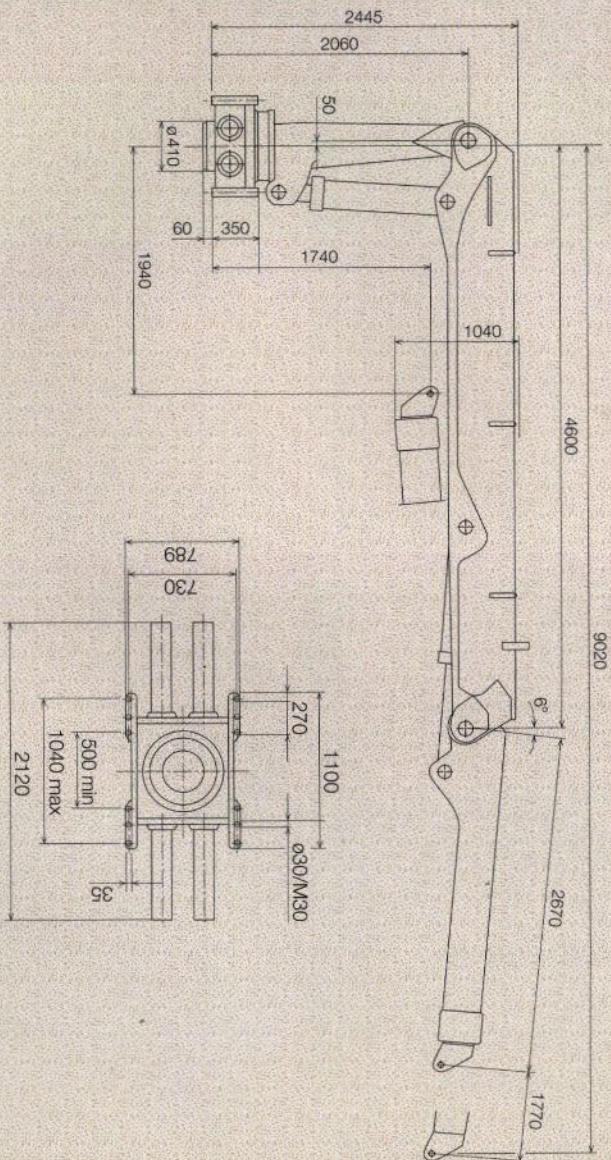
Specially designed for heavy tree lengths, e.g. oak or beech of the type found in central and western Europe. Such trunks are valuable and must always be handled with care and precision – even if the tempo is high and the working days are long.

With an effective lifting capacity of 33 tonne-metres, JONSERED 3390 lifts fully 3 650 kg at 9 metres reach. But lifting capacity is not everything – the boom system's perfect geometry and a high slewing torque are a couple of other important points that make the

3390 a strong, efficient, yet easily handled weightlifter.

The base, loader body and boom system are powerful and designed for a long service life. But the crane's transport height is still only 2 445 mm, which allows it to be installed at the front of a semitrailer without difficulty.

JONSERED 3390 is the crane for the heavy, difficult jobs where strength, combined with responsiveness, safety and precision is a must – for profitable work day after day, year after year...



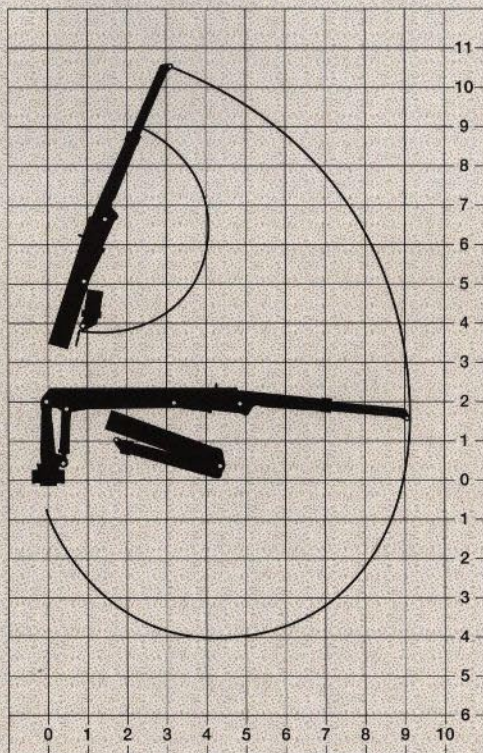
JONSERED 3390

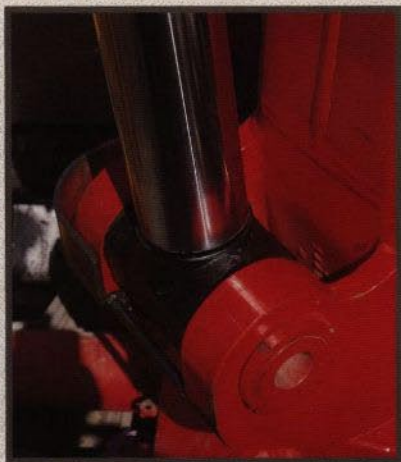
TECHNICAL DATA

Lifting capacity:	33.6 tm (330 kNm)
Hydraulic outreach:	9.0 m
Travel of hydraulic extension:	1.77 m
Radius/lifting performance:	3.0 m - 9 900 kg 5.0 m - 6 700 kg 7.0 m - 4 800 kg 9.0 m - 3 650 kg
Working pressure:	25 MPa
Slewing angle:	390°
Slewing torque:	47 kNm brutto
Parked width:	2 445 mm
Weight:	3 450 kg

JONSERED forestry cranes are designed using strength calculations in accordance with the Swedish standard IKH 4.30.1, corresponding to DIN 15018 class H1/B4. The cranes are reviewed by the Swedish Plant inspectorate.

We reserve the right to introduce modifications.
The illustrations do not always show the standard version of the crane.





JONSERED 3390 really is built to meet tough demands.

 **JONSERED**

HIAB FOREST AB • S-821 83 HUDIKSVALL • SWEDEN